

Forza Power Technologies is a leading provider of power protection, power conditioning, and back up management power solutions. Our comprehensive solutions are designed with both the home and business user environment in mind. Our products, improve the manageability, availability, and performance of consumer electronics, computing, network communication and industrial equipment of all sizes.

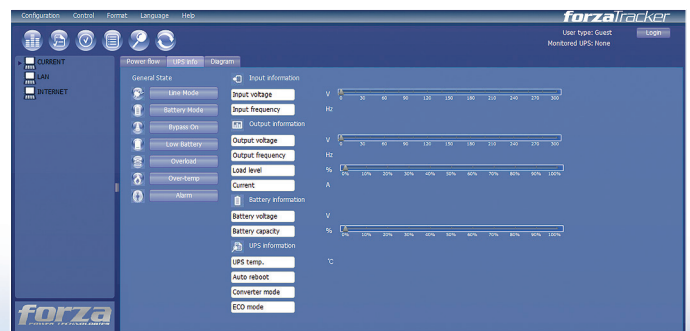
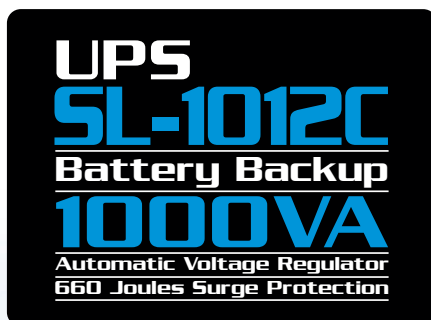
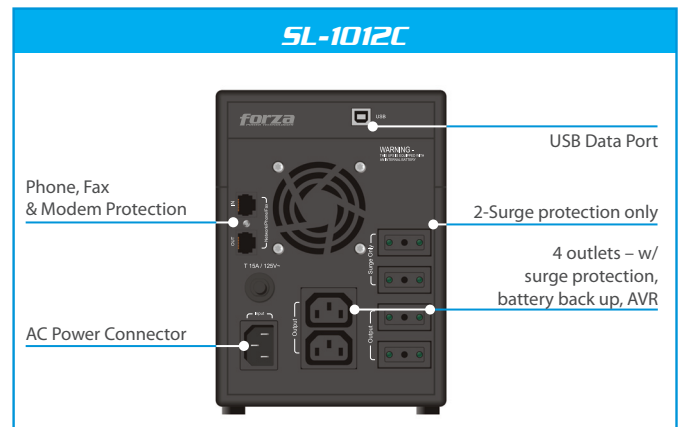


Turn it on. Keep it on.



FEATURES

- Uninterruptible power system
- Power protection for home and office equipment
- Boost & buck AVR to stabilize voltage
- 6 outlets – w/ surge protection, battery back up, AVR (4), and surge protection only (2)
- Phone, Fax & modem protection (RJ-45)
- USB communication port
- Illuminated power button
- Battery mode and charge LED indicator
- Long back up time
- 660 Joules surge rating
- Power management software CD



MODEL	FEATURES	SL-1012C
CAPACITY		1000VA/600W
INPUT	Input Voltage Compatibility	220/240VAC
	Input Voltage Range	162-268VAC
	Connection Type	ITALIAN PLUG (Chile/Uruguay)
	Cord Length	4.9ft/1.5m
	Frequency	45-65Hz (Auto Sensing)
OUTPUT	Output Nominal Voltage	220/240VAC
	Output Volt Amp Capacity	1000VA
	Output Watt Capacity (watts)	600W
	Output Voltage Regulation (Batt. Mode)	±10%
	Output Frequency	50/60Hz
	Output Frequency Regulation (Batt. Mode)	50Hz ±1Hz
	Output Waveform	Modified Sine Wave
	Outlet Receptacles Quantity/Type	8 ITALIAN PLUG (Chile/Uruguay)
	Full Battery Support and Surge Protection Outlets	6
Surge Suppression Outlets Only	2	
BATTERY	Battery Type & Number	12V/7.2AH 2PCS
	Back up Time (at a PC load with 17" monitor)	40 minutes
	Recharge Time	10 hours to 90% after complete discharge
VOLTAGE REGULATION	Voltage Regulation Description	220V ±12%
	Output Boost Feature from 162-198 VAC	+18%
	Output Buck Feature from 242-268 VAC	-15%
FREQUENCY REGULATION	Automatic Frequency Selection	YES
LINE/BATTERY TRANSFER	Typical Transfer Time	4-6 ms typical
	Low come back from battery to line power	169VAC
	High come back from battery to line power	262VAC
INDICATOR	AC Mode	Power button: Blue LED light
	Battery Mode	Power button: Blue LED light; Green flashing light; The 1st to 4th Blue LED light gradually indicates battery capacity.
	Fault Mode	Power button: Blue LED light; Red LED below power button
AUDIBLE ALARM	Battery Mode	Sounding every 10 seconds
	Low Battery	Sounding every 1 seconds
	Overload	Sounding every 0.5 seconds
	Battery Replacement	Sounding every 2 seconds
	Fault	Continuous sounding
PROTECTION	Full Protection	Line Mode: 110%+20%/-10%; shutdown after 5 minutes and go to fault mode. Battery Mode: 110%+20/-10%; shutdown after 5 sec. 120%+20%/-10%; shutdown immediately
	Joules	660J
PHYSICAL	Unit Dimension, DXWXH (mm)	392*145*205
	Unit Dimension, DXWXH (in)	15.4*5.7*8.1
	Net Unit Weight (kgs/lbs)	9.8kg
	Packing Dimensions (mm)	490*230*292
	Packing Dimensions (in)	19.29*9.06*11.5
ENVIRONMENT	Gross Packing Weight (kgs/lbs)	10.3kg
	Operating Environment	0° to +40° ,0 to 90% Relative Humidity(Non-condensing)
WARRANTY	Noise Level	"< 40dBA @ Line/Battery mode; < 45dBA @ Battery mode; measured 1 meter from any surface"
	Product Warranty	2 Years
SPECIAL FEATURES	Communication Port	Yes
	Dataline/Internet/Telephone Line Protection	RJ-45/11
	"Cold Start" Option	YES
ACCESORIES	Auto Charge	Yes
	USB Cable	Yes
	Monitoring Software	FORZATRACKER
	Other Software	NORTON INTERNET SECURITY, 90-Day Trial