

**Forza Power Technologies** is a leading provider of power protection, power conditioning, and back up management power solutions. Our comprehensive solutions are designed with both the home and business user environment in mind. Our products, improve the manageability, availability, and performance of consumer electronics, computing, network communication and industrial equipment of all sizes.

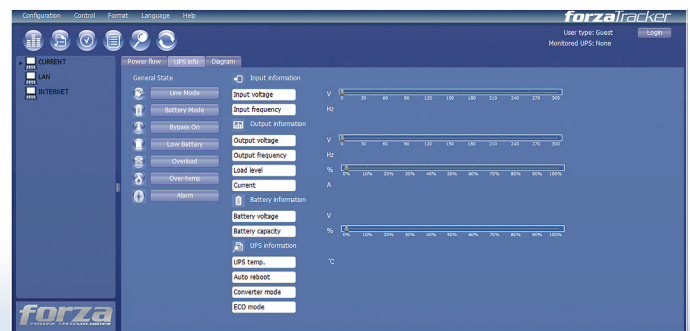
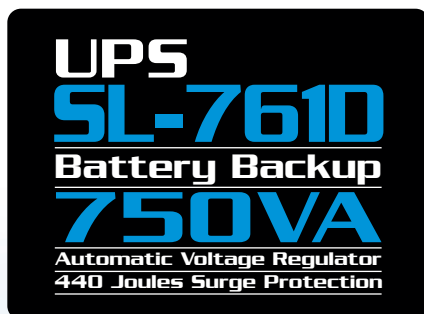
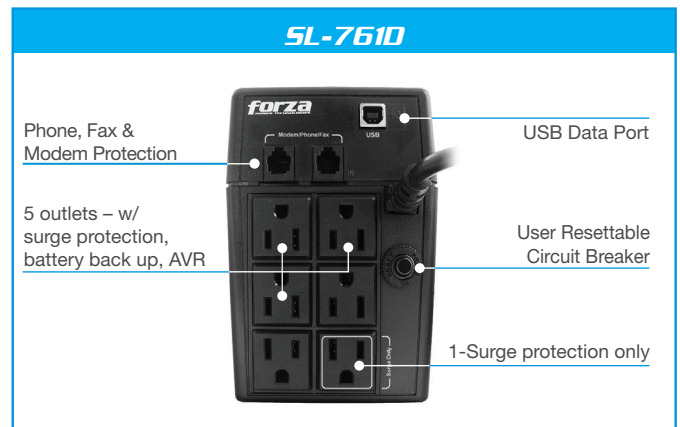


Turn it on. Keep it on.



**FEATURES**

- Uninterruptible power supply
- Power protection for home and office equipment
- Boost & buck AVR to stabilize voltage
- 6 outlets – w/ surge protection, battery back up, AVR (5), and surge protection only (1)
- Phone, Fax & modem protection (RJ-11)
- USB communication port
- Illuminated power button
- Long back up time
- 440 Joules surge rating
- ForzaTracker Power management software CD



MODEL	FEATURES	SL-761D
<b>CAPACITY</b>		750VA/375W
<b>INPUT</b>	Input Voltage Compatibility	110/120VAC
	Input Voltage Range	89-145VAC
	Connection Type	US PLUG (NEMA 5-15P)
	Cord Length	4.9ft/1.5m
	Frequency	40-∞ (Auto Sensing)
<b>OUTPUT</b>	Output Nominal Voltage	110/120VAC
	Output Volt Amp Capacity	750VA
	Output Watt Capacity (watts)	375W
	Output Voltage Regulation (Batt. Mode)	±10%
	Output Frequency	50/60Hz
	Output Frequency Regulation (Batt. Mode)	60Hz ±1Hz
	Output Waveform	Modified Sine Wave
	Outlet Receptacles Quantity/Type	6 NEMA 5-15R
	Full Battery Support and Surge Protection Outlets	5
	Surge Suppression Outlets Only	1
<b>BATTERY</b>	Battery Type & Number	12V/7.2AH 1PCS
	Back up Time (at a PC load with 17" monitor)	22 minutes
	Recharge Time	6 hours to 90% after complete discharge
<b>VOLTAGE REGULATION</b>	Voltage Regulation Description	120V ±12%
	Output Boost Feature from 89-108 VAC	+18%
	Output Buck Feature from 132-145 VAC	-15%
<b>FREQUENCY REGULATION</b>	Automatic Frquency Selection	YES
<b>LINE/BATTERY TRANSFER</b>	Typical Transfer Time	2-6 ms typical
	Low come back from battery to line power	92VAC
	High come back from battery to line power	142VAC
<b>INDICATOR</b>	AC Mode	Blue LED Light
	Battery Mode	Blue LED Light, Green LED Flashing
<b>AUDIBLE ALARM</b>	Fault Mode	Blue LED Light
	Battery Mode	Sounding every 10 seconds
	Low Battery	Sounding every 1 second
	Overload	Sounding every 0.5 seconds
	Battery Replacement	Sounding every 2 seconds
<b>PROTECTION</b>	Fault	Continuous sounding
	Full Protection	<b>Line Mode:</b> 110%+20%/-10%; shutdown after 5 minutes and go to fault mode. 120%+20%/-10%; shutdown immediately and go to fault mode. <b>Battery Mode:</b> 110%+20/-10%; shutdown after 5 sec. 120%+20%/-10%; shutdown immediately
<b>PHYSICAL</b>	Joules	440J
	Unit Dimension, DXWXH (mm)	330*100*140
	Unit Dimension, DXWXH (in)	13.0*3.94*5.51
	Net Unit Weight (kgs/lbs)	5kg
	Packing Dimensions (mm)	385 *140*228
	Packing Dimensions (in)	15.16*5.51*8.98
<b>ENVIRONMENT</b>	Gross Packing Weight (kgs/lbs)	5.5kg
	Operating Environment	0° to +40° ,0 to 90% Relative Humidity(Non-condensing)
<b>WARRANTY</b>	Noise Level	Not to exceed 40dBA, measured 1 meter from any surface
	Product Warranty	2 Years
<b>SPECIAL FEATURES</b>	Communication Port	Yes
	Dataline/Internet/Telephone Line Protection	RJ-11
	"Cold Start" Option	YES
	Auto Charge	Yes
<b>ACCESSORIES</b>	USB Cable	Yes
	Monitoring Software	FORZATRACKER
	Other Software	NORTON INTERNET SECURITY, 90-Day Trial