



Mini Wireless-N Adapter
2.4GHz USB 2.0
User Guide

Copyright Statement

Nexxt Solutions™ is a registered trademark. Other trademarks or brand names contained herein are the trademarks or registered brand names of their respective owners. Copyright of the whole product as integration, including its accessories and software, belongs to Nexxt Solutions Ltd. No individual or third party is allowed to copy, plagiarize, reproduce, or translate it into other languages, without express consent from Nexxt Solutions, Ltd. All of the photos and product specifications mentioned in this manual are used as reference only. Upgrades of software and hardware may occur, and should there be any changes, Nexxt Solutions shall not be responsible for notifying about any such modifications in advance. If you would like to know more about our products, please visit our website at www.NexxtSolutions.com.

Contents

Chapter 1

Introduction

- 1.1 Package contents
- 1.2 Product features
- 1.3 Product applications
- 1.4 Preliminary steps
- 1.5 Disabling other manufacturers' wireless network adapters
- 1.6 Product care

Chapter 2

Installation Guide

- 2.1 Hardware Installation
 - 2.1.1 Install the USB network adapter

Chapter 3

How to use the Windows Built-in Wireless Configuration

- 3.1 Wireless Network Connection under Windows XP
- 3.2 Wireless Network Connection under VISTA
- 3.3 Wireless Network Connection under Windows 7

Appendix 1: Acronyms and terms

Appendix 2: Regulatory information

Chapter 1

Introduction

Thank you for purchasing the Nexxt Solutions Mini Wireless-N Network Adapter. Now you can take advantage of this great new technology and the freedom of setting up a network wirelessly in your home or office. By integrating the most advanced N networking technology, this convenient and compact USB network adapter is designed to deliver reliable high-speed connectivity along with enhanced performance in high-bandwidth applications. The easy installation will get you connected to your network in minutes. We also encourage you to read this manual thoroughly to become familiar with the most important features and achieve optimal performance from your new USB Network Adapter.

1.1 Package contents

- One Mini Wireless-N Network Adapter
- One Quick Installation Guide
- One CD ROM (with a digital copy of the Quick Installation Guide, User Manual and driver configuration tool)

1.2 Product features

- **Wireless N 150Mbps Speed**
Compatible with IEEE wireless standards, it

provides three times the wireless speed of the 802.11g technology. Perfect for video streaming, online conferencing and large file transfer applications.

- **Networking modes**

Infrastructure and ad-hoc (peer-to-peer).

- **Robust signal**

Delivers reliable high-speed connectivity to wireless networks, extends coverage by providing longer transmitting distances.

- **Auto negotiation capability**

Detects wireless networks and selects the optimal transmission rate automatically.

- **Advanced security**

WEP data encryption and WPA-PSK/WPA2-PSK encryption methods.

- **Compatibility**

Windows 7/XP/Vista operating systems.

1.3 Product applications

This Nexxt Wireless Adapter offers a fast, reliable and extendable solution for wireless access.

The most relevant features of this adapter are the following:

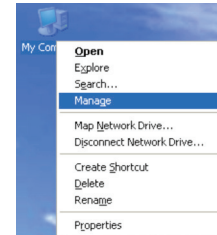
Greater mobility - enables you to have access to the wireless network from any location within the operating range.

Hassle-free installation - enables wireless communication for companies or places which are not suitable for wired LAN installations due to budget or building environment restrictions, such as historical buildings, rentals, or places for short-term usage.

Flexibility - adapts easily to businesses or individuals that require regular alteration of the networking topology.

Easy expansion - allows you to expand your network in order to include multiple devices and peripherals.

Small office/Home office - provides a quick way to establish a SOHO network installation, either on a permanent or temporary basis, according to the user's needs.



1.4 Preliminary steps

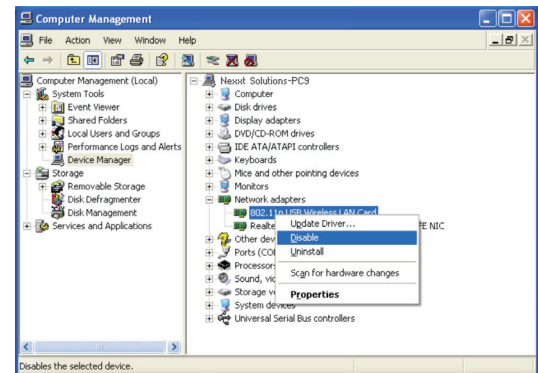
1. Please read this user guide thoroughly before installing and using this product.
2. In order to avoid possible UI (user interface) conflicts, close or uninstall any configuration programs belonging to other manufacturers prior to setting up the Nexxt Solutions network adapter.
3. To avoid any potential conflicts with network adapters from other manufacturers, we recommend that you first disable them completely before proceeding with the installation of the Nexxt Solutions driver.

1.5 Disabling other manufacturers' wireless network adapters

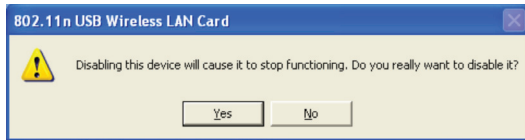
(**Note:** screenshots in this manual might look slightly different, depending on the Windows version you own).

1. Right click "My Computer" and then select "Manage".

2. On the Computer Management screen, go to "Device Manager" - "Network adapters", and right-click the network adapter you wish to disable. Click on "Disable" to continue.



3. When prompted, click the "Yes" button on the dialogue box in order to disable the network adapter you just selected.



1.6 Product care

- To guarantee best performance of the unit, never expose this device to water or humid environments.
- Keep the adapter away from hazardous substances, chemicals, acids and alkalis.
- Never expose the adapter to direct sunlight or excessive heat.
- Please contact Nexxt Solutions tech support if any problems occur during the setup process.

Chapter 2 Installation guide

This chapter will guide you through the process of installing the network adapter software package, using the supplied resource CD.

The software installation steps and operating guide in this manual are explained for Windows XP. Installation steps for other operating systems are similar.

2.1 Hardware installation

2.1.1 Installing the USB network adapter

1. First insert the Wireless USB Adapter into the USB port of your computer.



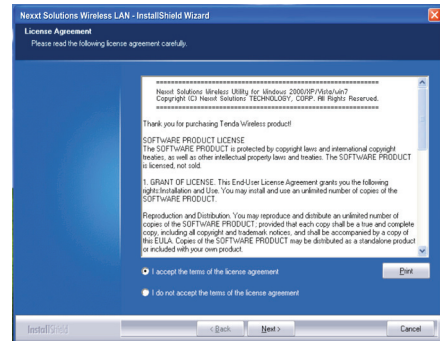
- 2.If the “Found New Hardware Wizard” system dialogue appears, we recommend that you select “Cancel” and use the included Setup Wizard software CD for fast installation.



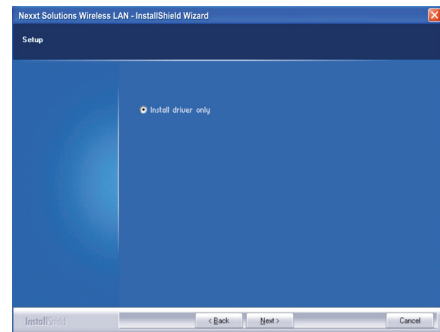
- 3.Insert the supplied software CD into the CD drive of your computer. The CD should run automatically, opening the Welcome screen on your desktop. Click on the “RUN” button to continue. (If the autorun fails, double click “Nexxt.exe” in the software CD to manually install the software).



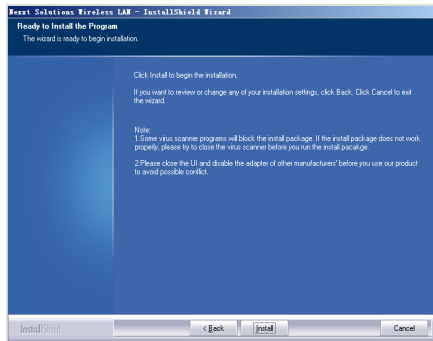
- 4.Select “I accept the terms of the license agreement” and click “Next”.



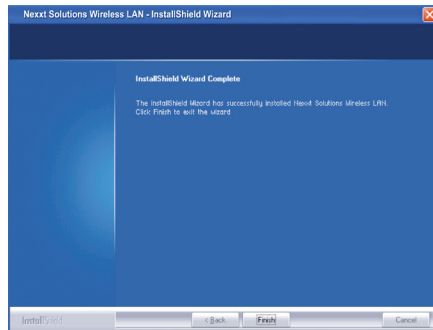
- 5.The “Install driver” option will be displayed in this stage. This method uses the WINDOWS built-in wireless configuration program.



6. Click “Install” to begin the driver installation.



7. Click “Finish” to complete the installation.



Chapter 3

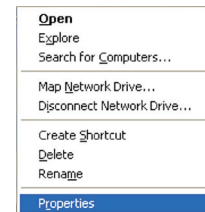
How to use the Windows built-in wireless configuration

This chapter explains how to use the Windows built-in wireless configuration to connect to the wireless network.

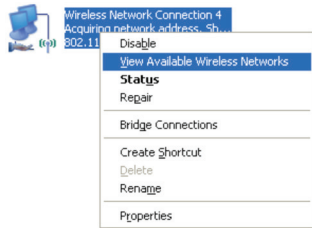
Use of the Windows Built-in Wireless Configuration requires enabling the windows wireless configuration feature (enabled by default).

3.1 Wireless Network Connection under Windows XP

1. Right click “My Network Places” on the desktop and select “Properties”.

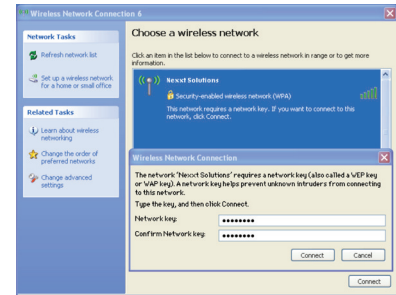


2. Open the network connection. In the drop-down menu, right-click "Wireless Network Connection" and select "View Available Wireless Networks", as shown below.



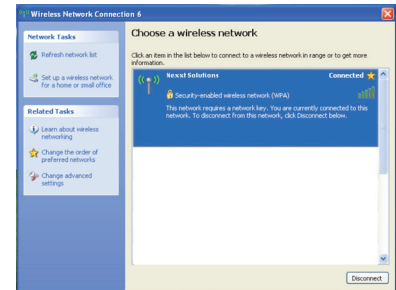
3. The currently scanned wireless networks will be displayed on the right side of the screen. If the one you want to connect to has not been scanned, click "Refresh Network List" to update the network list.

After selecting the desired wireless network, click "Connect" or double-click the wireless network to enable it. Enter the key in the corresponding dialogue box (which is case-sensitive), and click "Connect" to continue.

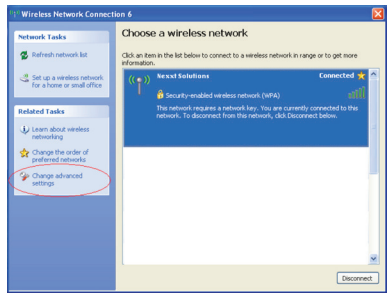


Note: If the wireless device you are connecting to is not encrypted, the key dialogue box will not pop up.

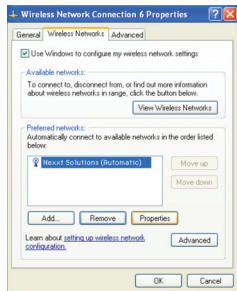
4. When "Connected" is displayed on the screen, as shown in the picture below, you will be able to start enjoying wireless access to the Internet.



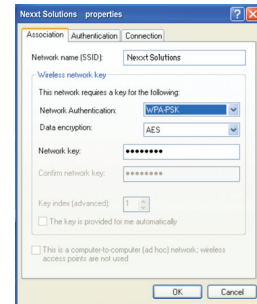
5. If you like, you can change the wireless network key by opening the "Change advanced settings" window.



6. Select “Wireless Networks” in order to choose the one you wish to modify, and then click “Properties”.

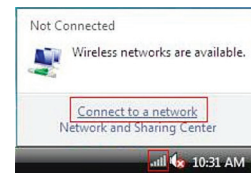


Enter the new key in the dialogue box, as indicated below.



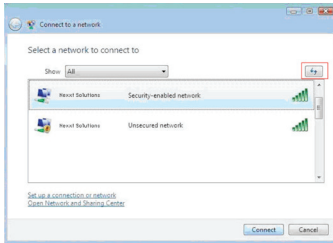
3.2 Wireless Network Connection in VISTA

1. Click the Wireless Connection icon in the lower right corner of your desktop. Select “Connect to a network”, as shown below.



2. After selecting the desired wireless network, click “Connect” or double-click the wireless network in order to enable it. Click the Refresh icon located in the upper right corner to update the network

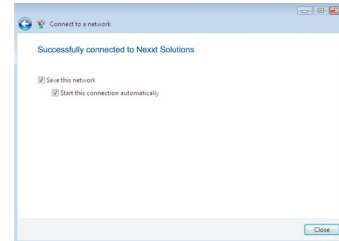
list, if the specified wireless network is not being displayed at this stage.



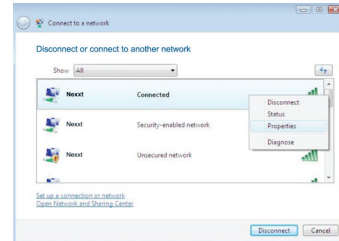
3.If the wireless network that you are connecting to has the security mode enabled, you'll be prompted to enter the network key. Click "Connect" after entering the correct passkey.



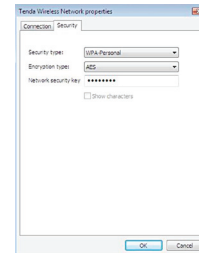
The following screen will appear once the connection to the wireless network has been established successfully.



If you want to change the wireless network key, simply right click the wireless network's SSID and then select "Properties".

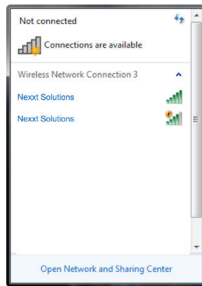


You can modify the key using the dialogue box that opens when selecting this option:

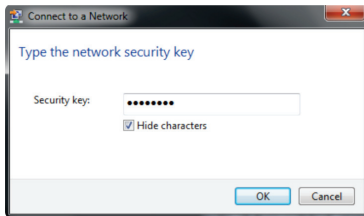


3.3 Wireless Network Connection in Windows 7

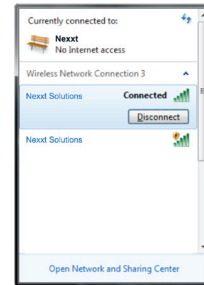
1. Click the wireless connection icon in the lower right corner of the computer's desktop to view the available wireless networks. Select the wireless network you wish to connect to and click "Connect" or double click the desired wireless network to enable it. If you don't find the specified network, please click the refresh icon in the upper right corner to update the list.



2. If the wireless network you are connecting to is encrypted, you will be prompted to enter the key. Click "Ok" once you enter the correct security key.



3. The window will display the "Connected" message once the connection has been established successfully. You can disconnect the network, view its status, or modify the wireless network properties by right-clicking on the wireless network item.



Appendix 1: Acronyms and terms

WLAN Wireless Local Area Network.

802.11 A family of specifications developed by the IEEE for WLAN technology.

802.11a An extension of 802.11 WLAN standards that provides up to 54 Mbps transmission in the 5 GHz UNII radio band.

802.11b An extension of the 802.11 WLAN standard that provides up to 11 Mbps of transmission in the 2.4 GHz ISM radio band. 802.11b uses DSSS modulation.

802.11g An extension of the 802.11 WLAN standard that provides up to 54 Mbps of transmission in the 2.4 GHz ISM radio band. 802.11g uses OFDM modulation and is backwards compatible with 802.11b.

802.11n A higher transmission rate, supports Multi-Input Multi-Output (MIMO) technology.

WEP Wired Equivalent Privacy. A security protocol for WLANs defined in the IEEE 802.11 standard.

WPA Wireless Protected Access. Adopts rotating keys.

RSN Robust Security Network. A substitute for WPA, and it adopts the 802.1x standard and advanced encryption.

ICS Microsoft Internet Connection Sharing enables multiple computers to share access to the Internet via one PC.

Appendix 2: Regulatory Information FCC Statement

This equipment has been tested and found to comply with the limits for a Class B digital device, pursuant to part 15 of the FCC rules. These limits are designed to provide reasonable protection against harmful interference in a residential installation. This equipment generates, uses and can radiate radio frequency energy and, if not installed and used in accordance with the instructions, may cause harmful interference to radio communications. However, there is no guarantee that interference will not occur in a particular installation. If this equipment does cause harmful interference to radio or television reception, which can be determined by turning the equipment off and on, the user is encouraged to try to correct the interference by one or more of the following measures:

- Reorient or relocate the receiving antenna.
- Increase the separation between the equipment and receiver.
- Connect the equipment into an outlet on a circuit different from that to which the receiver is connected.
- Consult the dealer or an experienced radio/TV technician for help.

To assure continued compliance, any changes or modifications not expressly approved by the party

responsible for compliance could void the user's authority to operate this equipment. (Example- use only shielded interface cables when connecting to computer or peripheral devices).

"The antenna(s) used for this transmitter must not be co-located or operating in conjunction with any other antenna or transmitter."

FCC Radiation Exposure Statement

This equipment complies with FCC radiation exposure limits set forth for an uncontrolled environment. This equipment should be installed and operated with the minimum distance of 20 cm. Operation is subject to the following two conditions:

- 1) This device may not cause interference and
- 2) This device must accept any interference, including interference that may cause undesired operation of the device.

Caution!

The manufacturer is not responsible for any radio or TV interference caused by unauthorized modifications to this equipment. Such modifications could void the user authority to operate the equipment.