

1

### Introduction

Thank you for purchasing the new **Kronos300** Universal range extender from Next Solutions™. If any of the following items are mismatched, missing or damaged, please contact the merchant from whom you purchased the unit for immediate replacement.

- Universal range extender
- Network cable
- Quick installation guide

2

### Product layout



3

Component	Description
1 Range extender button (WPS)	Enables the universal repeater mode on the device
2 LAN port	For connection to a computer, router or switch in your network.
3 RESET button	Press this button for over 7 seconds to restore the device to its factory default settings.
4 Wall plug	Conveniently designed to be plugged into any standard electrical outlet.

4

### LED indicators description

The LED indicators provide information about network activity, the connection and link status in real time. They also facilitate activity monitoring and troubleshooting the performance of the device.



5

LED	Status	Description
Power	Solid	The device is properly connected to the power supply
	Blinking	Bridged successfully
Range extender (RE)	Blinking	Negotiating key
	Off	Not bridged
	Solid	Strong signal
(Signal Strength)	Solid orange	Weak signal
	Off	Not bridged
LAN	Solid	Proper connection is established on the LAN port
	Blinking	Data is being transmitted through the LAN port

6

### Preliminary steps

Before you begin, follow the recommendations listed below:

- Verify that your Ethernet network is set up.
- Verify that your Internet connection is working
- Avoid connecting other devices into the same wall outlet as the repeater.
- Avoid using a power strip or a surge protector, since it may adversely affect the performance of this product.

7

### Hardware installation

1. Plug the extender into an electric outlet that is close to the wireless router or access point whose signal you intend to boost.  
**Note:** Proximity to the main wireless router/access point is only required during the initial setup process.
2. You have the choice of connecting wirelessly or you may connect your PC to the single LAN port of the extender using the supplied Ethernet cable.
3. Both setup methods are described below.

### Configuration methods

There are two configuration methods supported by the repeater: The first method is the instant configuration through the extender button. The second one is the web based configuration method which is accomplished using your internet browser.

8



Device configuration with wired and wireless clients

9

### Instant push-button setup

#### Note:

As the latest WPS 2.0 specification only supports WPA2 protocol, first you must make sure that the wireless router or access point you are using has this feature available and enabled.

One of the functions of the extender is to act as a bridge between a Wi-Fi router and a wireless device outside the router's range, by incorporating it to a wireless network that is up and running.

This is a very convenient and user-friendly procedure that we strongly recommend. To do this, simply follow the few easy steps described below.

10

1. Press the range extender's button on the front of the device for about 1 to 3 seconds.
2. The RE LED blinks while the extender attempts to add a wireless client (a computer or other device) to its wireless network.



11

3. Within two minutes, press the WPS or QSS button on your router, or follow the WPS instructions that came with your wireless device.
4. When the RE LED glows solid green, it means that the wireless range extender has connected to the desired router or access point successfully.



12

5. You can also login to the web management interface to check bridge status.

### Web-user interface

This wired setup requires the execution of the web-based configuration procedure, as described below:

1. First, connect your computer to the extender with the supplied Ethernet cable.
2. Plug the extender into an electrical outlet.  
**IMPORTANT:** Do not use the Ethernet cable to connect the extender to a router. If you do so, the extender will not work, since it is designed to only allow a wireless connection to the router.

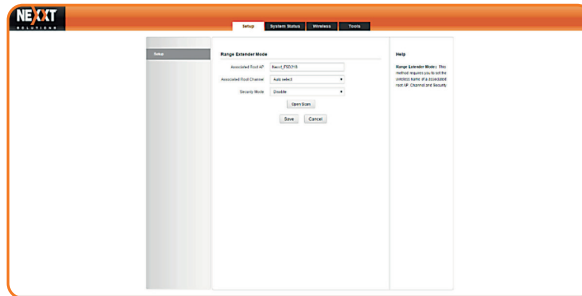
13

- On your computer, launch the web browser. On the address bar, type our site address **re.nexxtsolutions.com**, followed by enter.
- In this stage, the wireless repeater web interface will come up. The system will prompt you to enter the default password: **admin**. Then, click **OK** to continue.



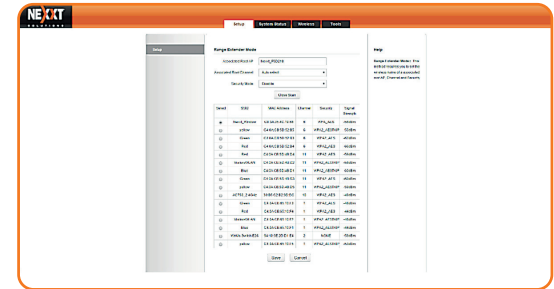
- The **Range extender** setup window will be displayed. Click on **Open scan** to detect the wireless device broadcasting the signal you want to extend.

14



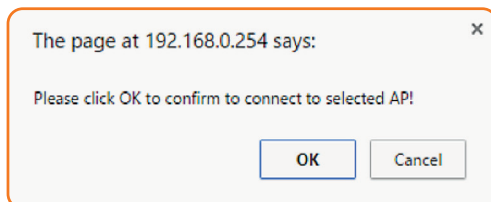
- Locate and select the desired remote router or access point from the list.

15



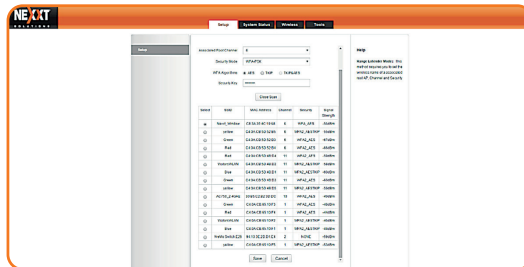
- When the following window appears, click **OK** to confirm the selected device on the previous step.

16



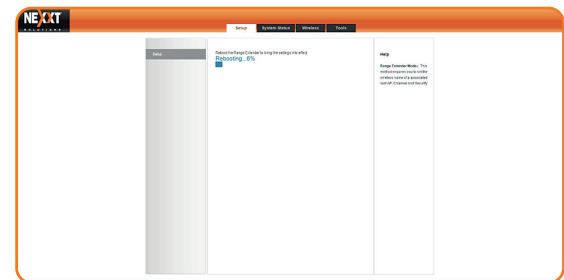
- Enter the remote device's password in the **Security Key** field. Verify that the channel, security mode and algorithm match the device's settings. Click **Save** when done.

17



- The extender will automatically reboot to enable the new configuration to take effect in the system.

18



- Once it finishes rebooting, you can enjoy instant internet access with the new extender using a wireless or wired connection

19

### Position your range extender

After the initial setup process has been completed, you may relocate the extender in a spot that allows optimum wireless coverage and performance to be achieved.

- The ideal location is to place the extender half-way between your wireless router and your Wi-Fi enabled devices, as illustrated below.

20



21

- Bear in mind that the best connection is established when there is a clear line of sight between the extender and the wireless router, and between the extender and the active clients on the network.
- Try to position the extender away from electrical devices that are potential sources of interference, such as ceiling fans, home security systems, microwaves, computers, refrigerators, or cordless phones.
- The extender signal strength LED can help you determine at what point the best performance is being achieved.
- Even though the usual connection to the extender is wireless, you can use its LAN port to connect a wired device, such as an Ethernet-enabled gaming console, printer or PC.

22

### FCC statement

This device complies with Part 15 of the FCC Rules. Operation is subject to the following two conditions: (1) This device may not cause harmful interference, and (2) this device must accept any interference received, including interference that may cause undesired operation.

This equipment has been tested and found to comply with the limits for a Class B digital device, pursuant to Part 15 of the FCC Rules. These limits are designed to provide reasonable protection against harmful interference in a residential installation. This equipment generates, uses and can radiate radio frequency energy and, if not installed and used in accordance with the instructions, may cause harmful interference to radio communications. However, there is no guarantee

23

that interference will not occur in a particular installation. If this equipment does cause harmful interference to radio or television reception, which can be determined by turning the equipment off and on, the user is encouraged to try to correct the interference by one of the following measures:

- Reorient or relocate the receiving antenna.
- Increase the separation between the equipment and receiver.
- Connect the equipment into an outlet on a circuit different from that to which the receiver is connected.
- Consult the dealer or an experienced radio/TV technician for help.

FCC ID: X4YKRN300

24

### FCC caution

Any changes or modifications not expressly approved by the party responsible for compliance could void the user's authority to operate this equipment.

This transmitter must not be co-located or operating in conjunction with any other antenna or transmitter.

The manufacturer is not responsible for any radio or TV interference caused by unauthorized modifications to this equipment.

### Radiation Exposure Statement

This equipment complies with FCC radiation exposure limits set forth for an uncontrolled environment. This equipment should be installed and operated with minimum distance 20cm between the radiator and your body.